



# **Printing Simplified Chinese Characters (GB2312) from SAP System**

## **User Manual**

**For SATO CL4e Series Printers**

## Copyrights

---

Any unauthorized reproduction of the contents of this document, in part or whole, is strictly prohibited.  
© 2023 SATO Corporation. All rights reserved.

## Limitation of Liability

---

SATO Corporation and its subsidiaries in Japan, the U.S and other countries make no representations or warranties of any kind regarding this material, including, but not limited to, implied warranties of merchantability and fitness for a particular purpose. SATO Corporation shall not be held responsible for errors contained herein or any omissions from this material or for any damages, whether direct, indirect, incidental or consequential, in connection with the furnishing, distribution, performance or use of this material.

Specifications and contents of this document are subject to change without notice.

## Trademarks

---

SATO is a registered trademark of SATO Holdings Corporation and its subsidiaries in Japan, the U.S. and other countries.

SAP® is a registered trademark of SAP SE or its affiliates in Germany and in several other countries.

NiceLabel® is a registered trademark of Euro Plus d.o.o in the U.S.A. and other countries.

All other trademarks are the property of their respective owners.

## Software Updating Disclaimer

---

While all efforts have been taken to ensure accuracy and currency of the information contained herein, there are instances where the contents of this document may be outdated. In that case, proceed to your local SATO regional website (<https://www.sato-global.com/drivers/redirect.html>) to check whether an updated document has been made available for your reference.

## Contact Information

---

Access the following site and select the region/country nearest to you.  
<https://www.sato-global.com/about/locations.html>

# ***Table of Contents***

<b>Table of Contents .....</b>	<b>3</b>
<b>1. Overview .....</b>	<b>4</b>
<b>2. Configuration at SAP Environment .....</b>	<b>5</b>
<b>3. Using SATO Firmware with GB2312 Character Set .....</b>	<b>6</b>
<b>4. Example .....</b>	<b>7</b>
<b>5. Appendix .....</b>	<b>9</b>
5.1. Command Specifications .....	9
5.2. ITF File Sample with Simplified Chinese.....	13

# Overview

# 1

This document is to explain how to print **Simplified Chinese characters (GB2312)** from SAP system with SAPscript (ITF file upload method) to SATO **CL4e series** printers.

Please refer to the following document on how to use NiceLabel Pro to create the ITF file:

[https://www.sato-global.com/files/Integration\\_Options/SAP/SAPscript/Label Printing from SAP using SAPscript Technology.pdf](https://www.sato-global.com/files/Integration_Options/SAP/SAPscript/Label_Printing_from_SAP_using_SAPscript_Technology.pdf)

**Note:**

- 1) It is assumed the Chinese characters are entered on the Text Editor or read from database in the SAP environment. NiceLabel Pro is not able to create ITF file containing Chinese characters.
- 2) It is also assumed that the SAP system is Unicode Compliant, or at least supports inputting and displaying of Simplified Chinese.

# Configuration at SAP Environment

# 2

The SATO device type “ZLB\_SAT.pri” is using codepage 1103 (IBM PC Multilingual 850). This codepage is not able to support GB2312 character set.

Codepage **8400**, Simplified Chinese (based on GB2312-EUC, MS CP936) has to be used in order to print the Simplified Chinese characters.

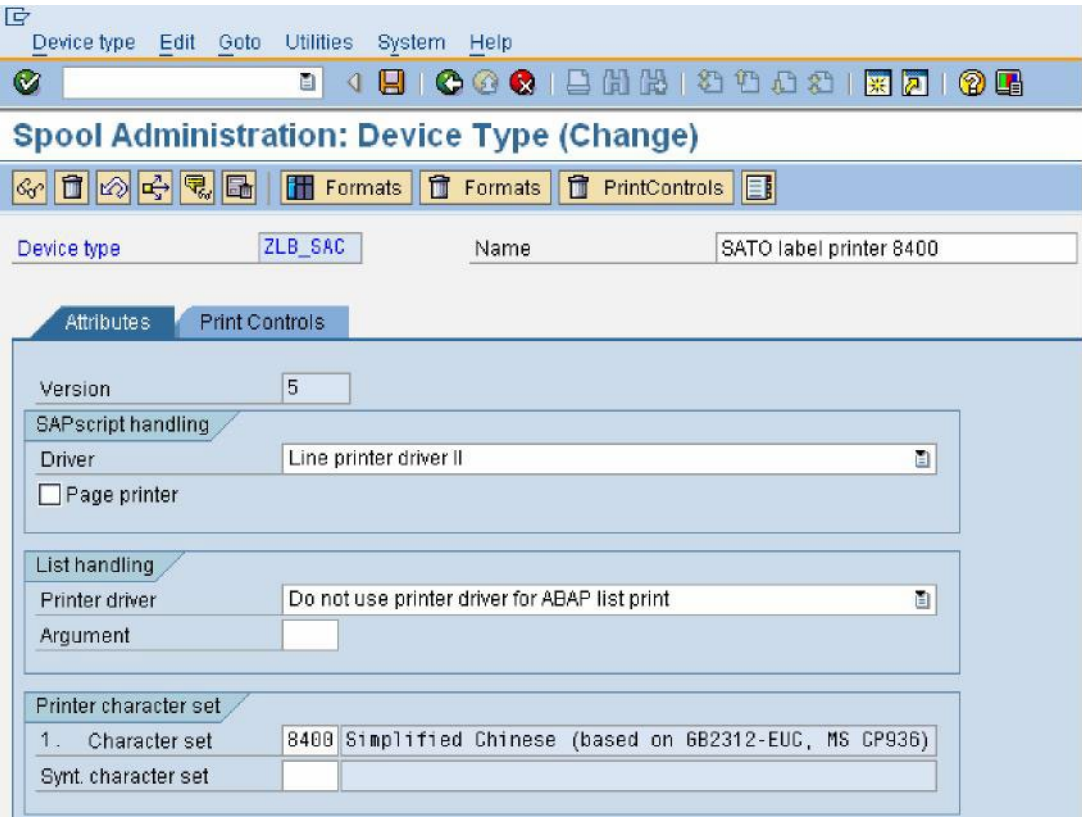


Figure 1 Using 8400 character set

# Using SATO Firmware with GB2312 Character Set

# 3

The following firmware has to be downloaded to the CL4e series printer in order to print the GB2312 Simplified Chinese characters:

**Firmware version 05.21.06.00A**

If you have any inquiries submit a request form at (<https://sato-globalhelp.zendesk.com/hc/en-001/requests/new>).

The following commands are to be used to print the Simplified Chinese characters:

Command	Descriptions
<b>C2</b>	To specify Horizontal Text Flow Chinese Character Font at width 24× height 24 dot
<b>C9</b>	To specify mixture of horizontal text flow of Chinese Character Font at width 24× height 24 dot and half-sized character at width 12× height 24 dot
<b>c2</b>	To specify vertical text flow Chinese Character Font at width 24× height 24 dot.
<b>c9</b>	To specify mixture printing of vertical Chinese character font at width 24× height 24 dot and half-sized character at width 12× height 24 dot.

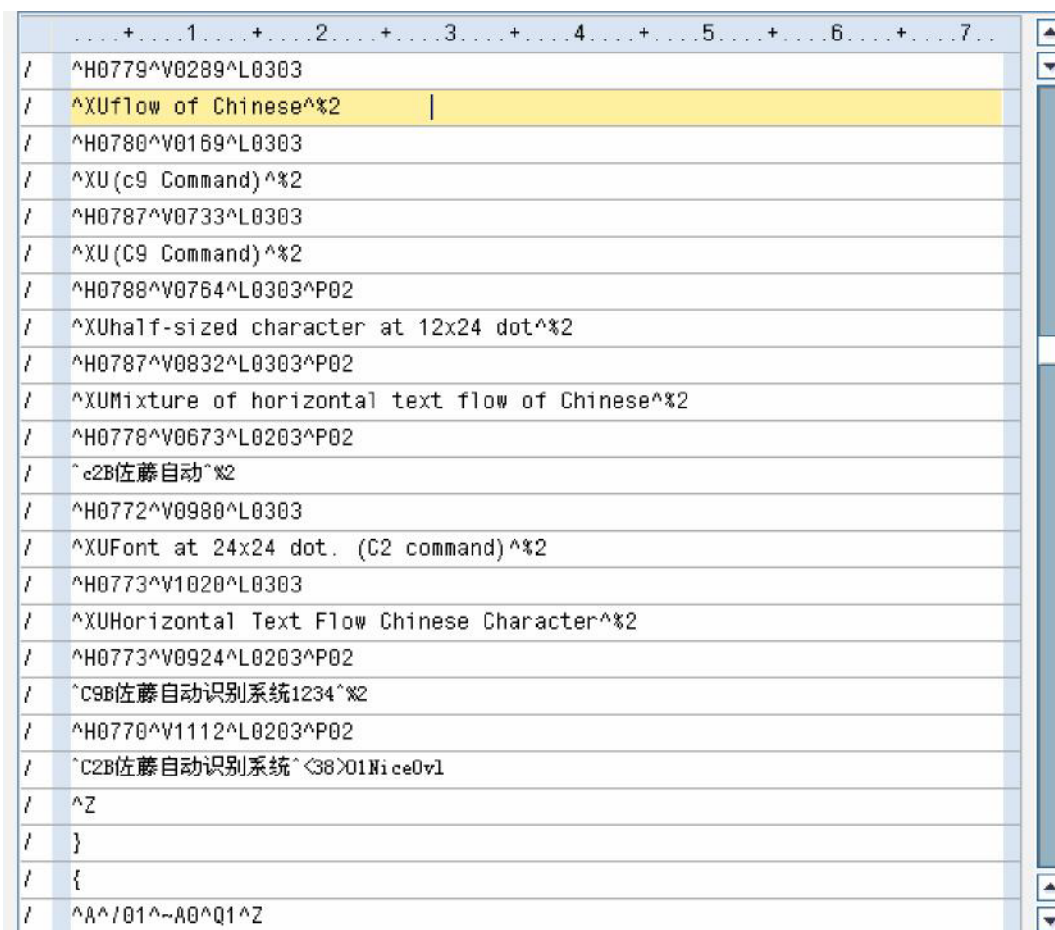
**Table 1 Commands to print Simplified Chinese**

Please refer to the appendix for the detail description of the commands.

# 4

## Example

The sample of the ITF file below can be downloaded from the appendix.



```
.....+.....1.....+.....2.....+.....3.....+.....4.....+.....5.....+.....6.....+.....7.....
/ ^H0779^V0289^L0303
/ ^XUflow of Chinese^%2 |
/ ^H0780^V0169^L0303
/ ^XU(c9 Command)^%2
/ ^H0787^V0733^L0303
/ ^XU(C9 Command)^%2
/ ^H0788^V0764^L0303^P02
/ ^XUhalf-sized character at 12x24 dot^%2
/ ^H0787^V0832^L0303^P02
/ ^XUMixture of horizontal text flow of Chinese^%2
/ ^H0778^V0673^L0203^P02
/ ^c2B佐藤自动^%2
/ ^H0772^V0980^L0303
/ ^XUFont at 24x24 dot. (C2 command)^%2
/ ^H0773^V1020^L0303
/ ^XUHorizontal Text Flow Chinese Character^%2
/ ^H0773^V0924^L0203^P02
/ ^c9B佐藤自动识别系统1234^%2
/ ^H0770^V1112^L0203^P02
/ ^c2B佐藤自动识别系统^<38>D1Nice0v1
/ ^Z
/ }
/ {
/ ^A^/01^~A0^Q1^Z
```

Figure 2 ITF file with Simplified Chinese

**Note:** Parameter “B” has to be used if the binary code of the Simplified Chinese is specified.

Using the above mentioned device type (with codepage 8400) and the SATO firmware with GB2312 character set, the following printout can be produced.



Figure 3 Printout with Simplified Chinese



# Appendix

# 5

## 5.1. Command Specifications

### 24×24 dot Horizontal Text Flow Chinese Character Font Specification

Applicable Printer	CL4xxe	CL6xxe	M-8400RVe	M-5900RVe	M-84xxSe
<b>24×24 dot Horizontal Text Flow</b>					<b>ESC+C2</b>
<b>Chinese Character Font Specification</b>					
16 Hex Code	ESC	C2	Parameter		
	<1B>16	<43>16<32>16	an~n		
Default Value	NO				

Valid Range & Time Frame of Command	When power is switched off	Set parameter will not be maintained.
	Valid Range within Items	Set parameter will become invalid.
	Valid Range among Items	Set parameter will become invalid.

**[Function]**

To specify Horizontal Text Flow Chinese Character Font at width 24× height 24 dot.

**[Format]**

<C2>an~n

•Parameter

a 「Code Specification Mode」 =

H	: HEX Character Specification
B	: Binary Code Specification
I	: with smoothing function based on HEX
C	: with smoothing function based on binary code
J	: with highlighting function base on HEX
D	: with highlighting function based on binary code
K	: with smoothing and highlighting function based on HEX
E	: with smoothing and highlighting function based on binary code

n 「Data」 = Refer to Chinese Character Code (GB2312) Range Table

\* Printing will not be executed properly when data size increase or decrease

**[Coding Example]**

16 Hex Character Code Specification      Horizontal Direction Ratio : 2 times      Vertical Direction Ratio : 3 times

<A>

<V>100<H>100<P>8<L>0203

**<C2>HB0A1B0A2B0A3B0A4B0A5**

<Q>1 <Z>

**[Supplementary Explanation]**

- |                                   |   |   |
|-----------------------------------|---|---|
| 1. 16 Hex Character Code          | = | Chinese Character Code 4 byte ASCII / 1 character |
| 2. Binary Code                    | = | Chinese Character Code 2 byte / 1 character       |
| 3. Smoothing Function Valid Ratio | = | horizontal, vertical valid range : 3~12 times     |
| 4. Emphasis Function Valid Ratio  | = | horizontal, vertical valid range : 1~5 times      |

**[Point]**

1. Characters of Emphasis Function will increase horizontally when it follows the enlargement specification.
2. When using Emphasis Function, some characters may not be printed clearly.

**【Valid Command】**

Print Position	<V>	<H>								
Modification	<P>	<L>	<?>	<&>	< >	<0>	<WD>			

## 24×24 dot Horizontal Text with Mixture of Half-sized, Fill-sized Chinese Character Font Specification

Applicable Printer	CL4xxe	CL6xxe	M-8400Rve	M-5900Rve	M-84xxSe
<b>24×24 dot Horizontal Text with Mixture of Half-sized, Full-sized Chinese Character Font Specification</b>					<b>ESC+C9</b>
16 Hex Code	ESC <1B>16	C9 <43>16<39>16	Parameter an~n		
Default Value	NO				

Valid Range & Time Frame of Command	When power is switched off	Set parameter will not be maintained
	Valid range within Items	Set parameter will become invalid.
	Valid range among Items	Set parameter will become invalid.

### [Function]

To specify mixture of horizontal text flow of Chinese Character Font at width 24× height 24 dot and half-sized character at width 12× height 24 dot.

### [Format]

<K9>an~n

#### ●Parameter

a 「Code Specification Mode」 =

H	: HEX Character Specification
B	: Binary Code Specification
I	: with smoothing function based on HEX
C	: with smoothing function based on binary code
J	: with highlighting function base on HEX
D	: with highlighting function based on binary code
K	: with smoothing and highlighting function based on HEX
E	: with smoothing and highlighting function based on binary code

n 「Data」 = Refer to Chinese Character Code (GB2312) Range Table

\* Printing will not be executed properly when data size increase or decrease

\* Specifiable code of half-sized character is from 20h~7Fh as there is an overlap with Chinese Character Code (GB2312).

### [Coding Example]

16Hex Character Code Specification      Horizontal Direction Ratio : 2 times      Vertical Direction Ratio : 3 times

<A>

<V>100<H>100<P>8<L>0203

<C9>HB0A1B0A2B0A3B0A4B0A5303132

<Q>1 <Z>

### [Supplementary Explanation]

1. 16 Hex Character Code = Chinese Character Code 4 byte ASCII / 1 character
2. Binary Code = Chinese Character Code 2 byte / 1 character
3. Smoothing Function Valid Ratio = horizontal, vertical valid range : 3~12 times
4. Emphasis Function Valid Ratio = horizontal, vertical valid range : 1~5 times

### [Point]

1. Characters of Emphasis Function will increase horizontally when it follows the enlargement specification.
2. When using Emphasis Function, some characters may not be printed clearly.

### [Valid Command]

Print Position	<V>	<H>								
Modification	<P>	<L>	<?>	<&>	<>	<0>	<WD>			

## 24×24 dot Vertical Text Flow Chinese Character Font Specification

Applicable Printer	CL4xxe	CL6xxe	M-8400RVe	M-5900RVe	M-84xxSe
<b>24×24 dot Vertical Text Flow Chinese Character Font Specification</b>				<b>ESC+c2</b>	
16 Hex Code	ESC	c2	Parameter		
	<1B>16	<63>16<32>16	an~n		
Default Value	NO				

Valid Range & Time Frame of Command	When power is switched off	Set parameter will not be maintained
	Valid range within Items	Set parameter will become invalid.
	Valid range among Items	Set parameter will become invalid.

### [Function]

To specify vertical text flow Chinese Character Font at width 24× height 24 dot.

### [Format]

<c2>an~n

#### ●Parameter

a 「Code Specification Mode」 =

- H : HEX Character Specification
- B : Binary Code Specification
- I : with smoothing function based on HEX
- C : with smoothing function based on binary code
- J : with highlighting function base on HEX
- D : with highlighting function based on binary code
- K : with smoothing and highlighting function based on HEX
- E : with smoothing and highlighting function based on binary code

n 「Data」 = Refer to Chinese Character Code (GB2312) Range Table

\* Printing will not be executed properly when data size increase or decrease

### [Coding Example]

16Hex Character Code Specification      Horizontal Direction Ratio : 2 times      Vertical Direction Ratio : 3 times

<A>

<V>100<H>100<P>8<L>0203

**<c2>HB0A1B0A2B0A3B0A4B0A5**

<Q>1 <Z>

### [Supplementary Explanation]

1. 16 Hex Character Code = Chinese Character Code 4 byte ASCII / 1 character
2. Binary Code = Chinese Character Code 2 byte / 1 character
3. Smoothing Function Valid Ratio = horizontal, vertical valid range : 3~12 times
4. Emphasis Function Valid Ratio = horizontal, vertical valid range : 1~5 times

### [Point]

1. Characters of Emphasis Function will increase horizontally when it follows the enlargement specification.
2. When using Emphasis Function, some characters may not be printed clearly.

### [Valid Command]

Print Position	<V>	<H>								
Modification	<P>	<L>	<?>	<&>	<.>	<0>	<WD>			

## 24×24 dot Vertical Text with Mixture of Half-sized, Full-sized Chinese Character Font Specification

Applicable Printer	CL4xxe	CL6xxe	M-8400RVe	M-5900RVe	M-84xxSe
<b>24×24 dot Vertical Text with Mixture of Half-sized, Full-sized Chinese Character Font Specification</b>					<b>ESC+c9</b>
16 Hex Code	ESC <1B>16	c9 <63>16<39>16	Parameter an~n		
Default Value	NO				

Valid Range & Time Frame of Command	When power is switched off	Set parameter will not be maintained.
	Valid range within Items	Set parameter will become invalid.
	Valid range among Items	Set parameter will become invalid.

### [Function]

To specify mixture printing of vertical Chinese character font at width 24× height 24 dot and half-sized character at width 12× height 24 dot.

### [Format]

<c9>an~n

#### •Parameter

a 「Code Specification Mode」 =

H	: HEX Character Specification
B	: Binary Code Specification
I	: with smoothing function based on HEX
C	: with smoothing function based on binary code
J	: with highlighting function base on HEX
D	: with highlighting function based on binary code
K	: with smoothing and highlighting function based on HEX
E	: with smoothing and highlighting function based on binary code

n 「Data」 = Refer to Chinese Character Code (GB2312) Range Table

\* Printing will not be executed properly when data size increase or decrease

\* Specifiable code of half-sized character is from 20h~7Fh as there is an overlap with Chinese Character Code (GB2312).

### [Coding Example]

16Hex Character Code Specification      Horizontal Direction Ratio : 2 times      Vertical Direction Ratio : 3 times

<A>  
 <V>100<H>100<P>8<L>0203  
<c9>HB0A1B0A2B0A3B0A4B0A5303132  
 <Q>1 <Z>

### [Supplementary Explanation]

1. 16 Hex Character Code = Chinese Character Code 4 byte ASCII / 1 character
2. Binary Code = Chinese Character Code 2 byte / 1 character
3. Smoothing Function Valid Ratio = horizontal, vertical valid range : 3~12 times
4. Emphasis Function Valid Ratio = horizontal, vertical valid range : 1~5 times

### [Point]

1. Characters of Emphasis Function will increase horizontally when it follows the enlargement specification.
2. When using Emphasis Function, some characters may not be printed clearly.

### [Valid Command]

Print Position	<V>	<H>								
Modification	<P>	<L>	<%>	<&>	<>	<0>	<WD>			

## 5.2. ITF File Sample with Simplified Chinese

```
/HTEXT
/:OBJECT TEXT
/:NAME ZTESTING_TEXT
/:ID ST
/:LANGUAGE E
/:FORM SYSTEM
/:STYLE
/:FIRST-USER A01ADM
/:FIRST-DATE 07 09 2000
/:FIRST-TIME 09 10 43
/:LAST-USER A01ADM
/:LAST-DATE 27 10 2000
/:LAST-TIME 15 30 41
/:TITLE '
/:TITLE1 '
/:TITLE2 '
/MTEXT
* {
/^A^EX0
/^AR^A3H001V001
/^CS3^#E4
/^A111590799^Z
/}
/{
/^A^PS^WKchinese.lbl^%2
/^H0700^V0570^L0303
/^XUFont at 24x24 dot. (c2 command)^%2
/^H0700^V0651^L0303
/^XUVertical text flow
/^H0700^V0611^L0303
/^XUChinese Character Font^%2
/ ^H0100^V0525^L0203^P02 / ^c9Bè̄ †â^«ç³»ç»ŸABC^%2 /
^H0779^V0249^L0303^P02 / ^XUCharacter Font at 24x24 dot and^%2
/^H0786^V0797^L0303
/^XUCharacter Font at 24x24 dot and^%2
/^H0781^V0209^L0303^P02
/^XUhalf-sized character at 12x24 dot^%2
/^H0779^V0329^L0303
/^XUMixture of vertical text
/^H0779^V0289^L0303
/^XUflow of Chinese^%2
/^H0780^V0169^L0303
/^XU(c9 Command)^%2
/^H0787^V0733^L0303
/^XU(C9 Command)^%2
/^H0788^V0764^L0303^P02
/^XUhalf-sized character at 12x24 dot^%2
/^H0787^V0832^L0303^P02
/^XUMixture of horizontal text flow of Chinese^%2
/^H0778^V0673^L0203^P02
/^c2Bä1/2lè—Dè†aš^%2
/^H0772^V0980^L0303
/^XUFont at 24x24 dot. (C2 command)^%2
/^H0773^V1020^L030
/^XUHorizontal Text Flow Chinese Character^%2
/^H0773^V0924^L0203^P02
```

```
/^C9Bä1/2Π è—œè†âšë¯ †â^«ç³»ç»Ÿ1234^º%2
/^H0770^V1112^L0203^P02
/^C2Bä1/2D è—œè†âšë¯ †â^«ç³»ç»Ÿ^<38>01NiceOvl
/^Z
/}
/ { / ^A^
/01^~A0^Q1^Z
/}
```

\*\* END \*\*

**SAVO**