



my
machine



Breville

NESPRESSO®

MORE RECIPES ON





Nespresso, an exclusive system creating the perfect espresso, time after time. All *Nespresso* machines are equipped with a unique extraction system that guarantees up to 19 bar pressure. Each parameter has been calculated with great precision to ensure that all the aromas from each Grand Cru can be extracted, to give the coffee body and create an exceptionally thick and smooth crema.

CONTENT

Safety precautions	4-6
Overview	7
Specifications	7
First use or after long period of non-use	8
Energy saving concept	8
Coffee preparation	9
Aeroccino - instructions of use	10-11
Cleaning the Aeroccino	12
Cleaning	13
Descaling	13-14
Programming the volume	15
Reset to factory settings	15
Emptying the system	15
Disposal and environmental protection	15
Troubleshooting	16
Troubleshooting Milk froth preparation	16
Limited warantee	17
Contact <i>Nespresso</i> Club	17

SAFETY PRECAUTIONS



⚠ CAUTION: the safety precautions are part of the appliance. Read them carefully before using your new appliance for the first time. Keep them in a place where you can find and refer to them later on.

⚠ CAUTION: when you see this sign, please refer to the safety precautions to avoid possible harm and damage.

i INFORMATION: when you see this sign, please take note of the advice for the correct and safe usage of your appliance.

- The appliance is intended to prepare beverages according to these instructions.
- Do not use the appliance for anything other than its intended use.

- This appliance has been designed for indoor and non-extreme temperature conditions use only.
- Protect the appliance from direct sunlight effect, prolonged water splash and humidity.
- This is a household appliance only. It is not intended to be used in: staff kitchen areas in shops, offices and other working environments; farm houses; by clients in hotels, motels and other residential type environments; bed and breakfast type environments.
- This appliance may be used by children of at least 8 years of age, as long as they are supervised and have been given instructions about using the appliance safely and are fully aware of the dangers involved. Cleaning and user maintenance shall not be made by children unless they are older than 8 and they are supervised by an adult.
- Keep the appliance and its cord out of reach of children under 8 years of age.
- This appliance may be used by

persons with reduced physical, sensory or mental capabilities, or whose experience or knowledge is not sufficient, provided they are supervised or have received instruction to use the appliance safely and understand the dangers.

- Children shall not use the appliance as a toy.
- The appliance is only to be used with the base provided.
- The manufacturer accepts no responsibility and the guarantee will not apply for any commercial use, inappropriate handling or use of the appliance, any damage resulting from use for other purposes, faulty operation, non-professionals' repair or failure to comply with the instructions.

Avoid risk of fatal electric shock and fire

- In case of an emergency: immediately remove the plug from the power socket.
- Only plug the appliance into suitable, easily accessible, earthed

mains connections. Make sure that the voltage of the power source is the same as that specified on the rating plate. The use of an incorrect connection voids the guarantee.

The appliance must only be connected after installation

- Do not pull the cord over sharp edges, clamp it or allow it to hang down.
- Keep the cord away from heat and damp.
- If the supply cord is damaged, it must be replaced by the manufacturer, its service agent or similarly qualified persons, in order to avoid all risks.
- If the cord is damaged, do not operate the appliance. Return the appliance to the *Nespresso* Club or to a *Nespresso* authorized representative.
- If an extension cord is required, use only an earthed cord with a conductor cross-section of at least 1.5 mm² or matching input power.
- To avoid hazardous damage, never

place the appliance on or beside hot surfaces such as radiators, stoves, ovens, gas burners, open flame, or similar.

- Always place it on a horizontal, stable and even surface. The surface must be resistant to heat and fluids, like water, coffee, descaler or similar.
- Disconnect the appliance from the mains when not in use for a long period. Disconnect by pulling out the plug and not by pulling the cord itself or the cord may become damaged.
- Before cleaning and servicing, remove the plug from the mains socket and let the appliance cool down.
- To disconnect the appliance, stop any preparation, then remove the plug from the power socket.
- Never touch the cord with wet hands.
- Never immerse the appliance or part of it in water or other liquid.
- Never put the appliance or part of it in a dishwasher.

- Electricity and water together is dangerous and can lead to fatal electrical shocks.
- Do not open the appliance. Hazardous voltage inside!
- Do not put anything into any openings. Doing so may cause fire or electrical shock!
- The use of accessory attachments not recommended by the manufacturer may result in fire, electric shock or injury to persons.

Avoid possible harm when operating the appliance

- Never leave the appliance unattended during operation.
- Do not use the appliance if it is damaged, has been dropped or not operating perfectly. Immediately remove the plug from the power socket. Contact the *Nespresso* Club or *Nespresso* authorized representative for examination, repair or adjustment.
- A damaged appliance can cause electrical shocks, burns and fire.
- Always completely close the slider



and never open it during operation. Scalding may occur.

- Do not put fingers under coffee outlet, risk of scalding.
- Do not put fingers into capsule compartment or the capsule shaft. Danger of injury!
- Water could flow around a capsule when not perforated by the blades and damage the appliance.
- Never use a damaged or deformed capsule. If a capsule is blocked in the capsule compartment, turn the machine off and unplug it before any operation. Call the *Nespresso* Club or *Nespresso* authorized representative.
- Always fill the water tank with cold, fresh drinking water.
- Empty water tank if the appliance will not be used for an extended time (holidays, etc.).
- Replace water in water tank when the appliance is not operated for a weekend or a similar period of time.
- Do not use the appliance without the drip tray and drip grid to avoid spilling any liquid on surrounding

surfaces.

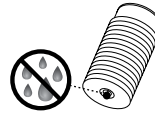
- Do not touch hot surfaces. Use handles, protected surfaces or knobs.
- To avoid scalding, keep always the milk frother lid closed during preparation.
- Extreme caution must be used when moving an appliance containing hot liquids.
- Do not use any strong cleaning agent or solvent cleaner. Use a damp cloth and mild cleaning agent to clean the surface of the appliance.
- To clean machine, use only clean cleaning tools.
- When unpacking the machine, remove the plastic film and dispose.
- This appliance is designed for *Nespresso* coffee capsules available exclusively through the *Nespresso* Club or your *Nespresso* authorized representative.
- All *Nespresso* appliances pass stringent controls. Reliability tests under practical conditions are performed randomly on selected units. This can show traces of any previous use.

- *Nespresso* reserves the right to change instructions without prior notice.

Cleaning the Aeroccino

- Unplug appliance when not in use for a long period and before cleaning. Allow to cool down before putting on or taking off parts, and before cleaning. Remove the appliance from the base before cleaning.

- Please make sure the bottom of the



Aeroccino and area underneath the base is dry, especially the connector area, prior to use.

Electricity and water together can cause a fatal electric shock.

- Never immerse the base nor the Aeroccino in water or other liquid.



Do not clean in dishwasher. Electricity and water together can cause a fatal electric shock.

Descaling

- *Nespresso* descaling agent, when used correctly, helps ensure the proper functioning of your machine over its lifetime and that your coffee experience is as perfect as the first day.
- For coffee and coffee&milk machines, descale according to user manual recommendations or specific alerts.

SAVE THESE INSTRUCTIONS

Pass them on to any subsequent user.

This instruction manual is also available as a PDF at nespresso.com

OVERVIEW

Packaging content



Coffee machine



Nespresso capsules Grand Crus tasting gift



Nespresso Welcome folder



User manual

A Soft touch controls. All controls are activated by touch.
Ristretto touch
Espresso touch
Lungo touch

B Slider for capsule insertion

C Adjustable cup support and drip grid

D Used capsule container & drip tray

E Coffee outlet

F Adjustable water tank and milk frother arm

G Aeroccino milk frother

H Water tank

I Water tank lid

J Frothing spring (for milk froth)

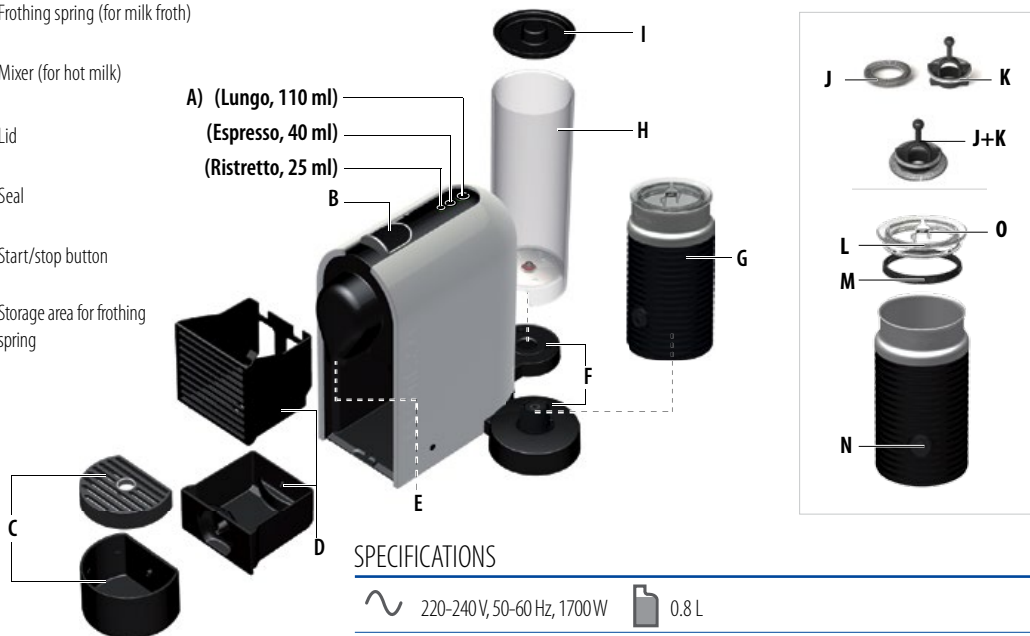
K Mixer (for hot milk)

L Lid

M Seal

N Start/stop button

O Storage area for frothing spring



SPECIFICATIONS

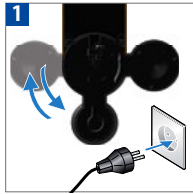
220-240V, 50-60 Hz, 1700W 0.8 L

P_{max} 19 bar 213 mm 251 mm 365 mm

~ 4 kg 3593

FIRST USE OR AFTER LONG PERIOD OF NON-USE

⚠ Read the safety precautions first to avoid risks of fatal electrical shock and fire.



1 Choose position for water tank. Plug the machine into the mains.



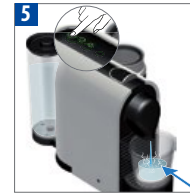
2 Rinse the water tank before filling it with potable water. Clean jug before first use and after every use according to instructions on page 15.



3 **⚠** Insert the drip tray, Aeroccino and the capsule container in position. For your safety, operate the machine only with drip tray and capsule container in position.



4 Turn the machine ON by opening the slider and pushing it towards the back of the machine. Light will blink on one of the coffee touch controls: heating up for approximately 25 seconds. Steady light: ready. The machine can be turned into OFF mode at any time when slider is closed by pushing and holding any touch control for more than 3 sec., confirmed by the other 2 controls flashing.



5 Place a container under coffee outlet. Press the Lungo control. Close the slider to rinse the machine. Repeat three times.

ENERGY SAVING CONCEPT



1 Automatic OFF mode: the machine will turn into OFF mode automatically after 9 minutes of non use.



2 The machine can be turned into OFF mode at any time when slider is closed by pushing any control for more than 3 sec., confirmed by the other 2 controls flashing.



3 To change automatic OFF mode from 9 to 30 minutes, when slider is closed press and hold both the Lungo and Ristretto controls for more than 3 sec. Espresso control flashes once for confirmation. To revert back to 9 minutes, repeat the same procedure. Espresso control flashes 3 times for confirmation.

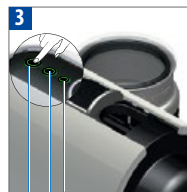
COFFEE PREPARATION



1 Fill the water tank with potable water.



2 Place a cup under the coffee outlet. Turn machine ON by either pushing the slider or touching the controls. Light will blink on one of the coffee touch controls: heating up for approximately 25 seconds. Steady light: ready.



3
 Ristretto 25 ml
 Espresso 40 ml
 Lungo 110 ml

Select the Ristretto control (25ml), Espresso (40 ml) or Lungo (110 ml) based on the chosen Grand Cru recommended cup size. You can select the desired coffee size even when the machine is still heating up. The coffee will then flow automatically when the machine is ready.

i The machine selects the most frequently chosen cup size (based on last 11 coffees), Espresso as factory setting. You can change this by selecting any other control.



4 Completely open the slider and insert the capsule.



5 Close the slider. Preparation will stop automatically.



6 To stop the coffee flow touch the lit control or move the slider towards the back of the machine until it stops.



7 **max. 4 sec**
 To manually top up your coffee, touch any of the controls immediately from end of preparation and touch lit control again to stop. Max 4 seconds.



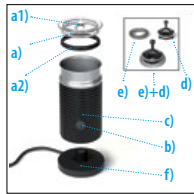
8 To change the selected cup size during brewing select the new desired control. The machine will immediately stop if the coffee volume extracted is larger than new desired control.



9 To accommodate a milk recipe glass, shift the cup support to either the left or right side magnets. The capsule will be automatically ejected.

⚠ CAUTION: Risk of electrical shock and fire! Make sure the under side of the milk frother is dry.

i TIP: For optimal milk froth, use whole or semi skimmed milk at refrigerated temperature (about 4-6 °C). To guarantee hygiene conditions, use heat treated milk (pasteurized), refrigerated & freshly opened only. Milk which has been frozen will not froth.



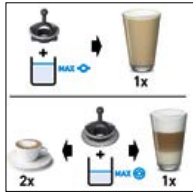
1. Overview: **a)** Lid **a1)** Storage area for frothing spring **a2)** Seal **b)** Start/stop Button **c)** Milk frother **d)** Mixer (for hot milk) **e)** Frothing spring (for milk froth) **f)** Base.



2. Clean before the first use. Attach the relevant whisk.

⚠ CAUTION: To ensure hygienic conditions and proper maintenance of the equipment, it is highly recommended to not use special enriched milks, powdered reconstituted milks nor flavoured milks. **⚠ CAUTION:** Syrup, sugar, chocolate powder or any other additives should not be added directly in the jug. This may damage the coating during the preparation.

AEROCCINO – INSTRUCTIONS OF USE



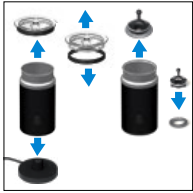
3. Fill milk frother up to one of the two «Max» level indicators.



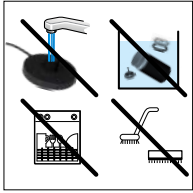
4. Place the lid on the Aeroccino. For a hot preparation, briefly press button to start. Button lights up Red. Take approx. 70-80 sec. For cold milk froth, keep button pressed for approx. 2 seconds. Button lights up Blue. Takes approx. 60 sec.

⚠ CAUTION: Use only a non-metal spoon to collect the foam in the jug. **⚠ CAUTION:** Clean before the first use and after each use according to the cleaning instructions. **⚠ CAUTION:** Ensure the jug is cold before removing it from the base. Or, if removing with care, rinse with cold water immediately to cool down the jug and avoid burning risks.

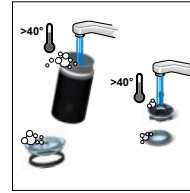
CLEANING THE AEROCOCCINO



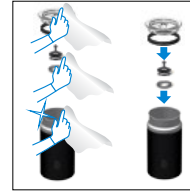
1. Remove the jug from the base, remove seal from lid, remove the whisk, remove the spring from the whisk.



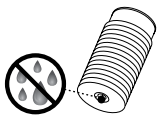
3. Do not put the Jug in the dishwasher and do not immerse into water for cleaning purposes, do not water the bottom part of the Aeroccino which contains the electrical plug, but clean the interior of the Aeroccino with detergent and rinse with warm/ hot water. Use non-abrasive cleaning materials.



2. Wash inner jug, seal, lid, whisk and spring with detergent and rinse with warm/hot water.



4. Dry all Aeroccino parts with a fresh and clean towel, cloth or paper and reassemble all parts.



⚠ CAUTION: In case base needs to be cleaned unplug it first and use only a damp cloth. Make sure the connector is dry before operating. Do not immerse the base in water neither put in the dishwasher. **⚠ CAUTION:** If the bottom part of the jug is wet, dry it before putting it back in contact with the plug. **⚠ CAUTION:** Only use non-abrasive cleaning materials. Do not use abrasives, sharp objects, brushes: risk of scratches and harm to the jug coating.

CLEANING



To ensure hygienic conditions, it is highly recommended emptying/cleaning the used capsule container every day.



1 Do not use any strong or abrasive cleaning agent or solvent cleaner. Do not put in a dishwasher. Never immerse the appliance or part of it in water.



2 Clean the coffee outlet regularly with a damp cloth.

DESCALING




Duration approximately 15 minutes.



Read the safety precautions on the descaling package and refer to the table for the frequency of use (see Descaling section in this manual).

⚠️ DESCALING MODE

CAUTION The descaling solution can be harmful. Avoid contact with eyes, skin and surfaces. Never use any product other than the *Nespresso* descaling kit available at the *Nespresso Club* to avoid damage to your machine. The following table will indicate the descaling frequency required for the optimum performance of your machine, based on water hardness. For any additional questions you may have regarding descaling, please contact the *Nespresso Club*.

Water hardness:			Descalce after:		°fH	French degree
°fH	°dH	CaCO ₃	Cups	40 ml	°dH	German degree
36	20	360 mg/l	1000			
18	10	180 mg/l	2000			
0	0	0 mg/l	4000		CaCO ₃	Calcium Carbonate



1 Empty the drip tray and the used capsule container.




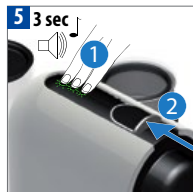
2 Fill the water tank with 1 unit of *Nespresso* descaling liquid and add 0.5 L of water.



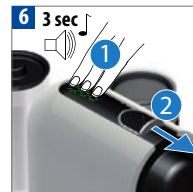
3 Place a container (minimum volume: 0.6 L) under the coffee outlet. Activate the machine by pushing one of the cup selection touches.



4  Blinking light: heating up.
Steady light: ready



5 **3 sec** To enter the descaling mode, at slider closed push all the 3 controls simultaneously for at least 3 sec. A short beep will confirm it. Open the slider.



6 **3 sec** Push all the 3 controls simultaneously for at least 3 sec. A short beep will confirm it. The control area will start blinking quickly. Close the slider to start descaling. Machine stops when water tank is empty.



7 Refill the water tank with the used descaling solution collected in the container and touch any control to repeat the procedure.

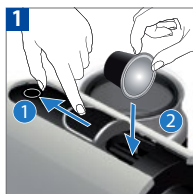


8 Empty and rinse the water tank, capsule container, drip tray and cup support thoroughly. Fill water tank with potable water. When ready, touch any control to rinse the machine. Machine will stop when done.



9 To exit the descaling mode, push all the 3 controls simultaneously for at least 3 sec. A short beep will confirm this. The machine is now ready for use.

PROGRAMMING THE VOLUME



1 Any control can be programmed. Completely open the slider and insert the capsule.



2 Touch and hold the control while closing the slider. Release control when desired volume is reached. The other 2 controls flash for confirmation.

RESET TO FACTORY SETTINGS



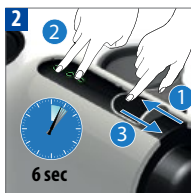
1 Press and hold the Espresso & Lungo controls together for at least 4 sec. The other control flashes for confirmation.

- i** Factory settings are:
1. Lungo, Espresso, Ristretto controls 110 ml, 40 ml, 25 ml.
 2. Automatic OFF mode after 9 minutes.
 3. Most frequently chosen cup size as Espresso control at 40 ml.

EMPTYING THE SYSTEM before a period of non-use, for frost protection or before a repair



1 To note, the machine remains blocked for 10 minutes after emptying! Remove the water tank. Place a container under the coffee outlet.



2 Open slider. Press and hold the Ristretto & Lungo controls together for at least 6 sec. The other control flash for confirmation. Then close the slider to start procedure.



3 Machine turns to OFF mode automatically when empty.

DISPOSAL AND ENVIRONMENTAL PROTECTION

This appliance complies with the EU Directive 2002/96/EC. Packaging materials and appliance contain recyclable materials. Your appliance contains valuable materials that can be recovered or can be recyclable. Separation of the remaining waste materials into different types facilitates the recycling of valuable raw materials. Leave the appliance at a collection point. You can obtain information on disposal from your local authorities.

No light on the controls. → The machine has turned to OFF mode automatically; touch one of the controls or push the slider. Check the mains: plug, voltage, fuse.

No coffee, no water. → Check the water tank, if empty, fill with cold, fresh, potable water. Descale it if necessary.

Coffee is not hot enough. → Preheat cup. Descale the machine if necessary.

The slider does not close completely or the machine doesn't start brewing. → Empty the capsule container. Check that no capsule is blocked inside the machine.

Leakage or unusual coffee flow. → Check that the water tank is correctly positioned.

Lights flash alternately from back to front. → Empty the used capsule container and check no capsules are blocked. Then touch any control. If problem persists, call the *Nespresso Club*.

Lights flash alternately from front to back. → Fill the water tank. If problem persists, call the *Nespresso Club*.

Lights flash quickly. → Exit descaling procedure, push all the 3 controls simultaneously for at least 3 sec. Disconnect plug from the mains and reconnect after 10 sec. If problem persists, call the *Nespresso Club*.

Water or coffee flow does not stop pushing any control. → Move gently the slider towards the back of the machine to stop the flow.

No coffee, water just comes out (despite inserted capsule). → Pull the slider to ensure it is closed. If problem persists, call the *Nespresso Club*.

Machine turns to OFF mode. → To save energy the machine will turn to OFF mode after 9 minutes of non use. See paragraph on «Energy saving concept».

TROUBLESHOOTING MILK FROTH PREPARATION

Aeroccino does not start. → Be sure to position the jug correctly on a clean base. Be sure to attach the whisk to the jug correctly.

Quality of milk froth not up to standard. → Be sure to use whole or semi-skimmed milk at refrigerated temperature (about 4-6° C). Be sure to use the appropriate whisk and the jug is clean.

Red Button blinking. → **a)** The appliance is too hot. Rinse it under cool water. **b)** Whisk is missing. **c)** Not enough milk. Fill milk frother up to one of the two «max» level.

Milk Overflows. → Be sure to use the appropriate whisk and check the corresponding indicator level.

LIMITED WARRANTY

Breville guarantees this product against defects in materials and workmanship for two years domestic use (or 3 months commercial use) from the date of purchase. During this period, Breville will either repair or replace, at its discretion, any defective product at no charge to the consumer. In the event of a product or accessory being repaired or replaced during the guarantee period, the guarantee on the repaired product will expire two years from the purchase date of the original product, not two years from the date of repair. This guarantee excludes liability for consequential loss or any other loss or damage caused to property or person arising from any cause whatsoever. It also excludes defects caused by the product not being used in accordance with instructions, accidental damage, misuse, being tampered with by unauthorised persons, improper maintenance, consumable items or normal wear and tear and does not cover the cost of claiming under the warranty. Except to the extent applicable by law, the terms of this warranty do not exclude, restrict or modify, and are in addition to, the mandatory statutory rights applicable to the sale of the product to you. Only the use of *Nespresso* capsules will guarantee the proper functioning and lifetime of your *Nespresso* machine. Any defect resulting from the usage of non-genuine *Nespresso* capsules will not be covered by this warranty.

How to Claim Under the Breville Warranty

Nespresso is handling product enquiries and product servicing on Breville's behalf. If you believe your product is defective, contact the *Nespresso* customer service team directly for instructions on where to send or bring it for repair by a Breville authorised service agent. Contact *Nespresso* **Australia**: 1800 623 033 or **New Zealand**: 0800 234 579 auclub@nespresso.com.

This product is imported and distributed by Breville and this warranty is provided by Breville. To the extent permitted by law, *Nespresso* has no liability for the product and all guarantees, warranties and conditions by *Nespresso* are excluded.

Breville

CONTACT THE NESPRESSO CLUB

As we may not have foreseen all uses of your appliance, should you need any additional information, in case of problems or simply to seek advice, call the *Nespresso* Club or your *Nespresso* authorised representative. Contact details for your *Nespresso* Club or your *Nespresso* authorised representative can be found in the «Welcome to *Nespresso*» folder in your machine box or at www.nespresso.com

Breville

UMILK

NESPRESSO